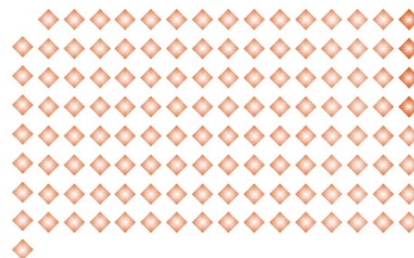




Bai Jia

青岛百佳机械有限公司

QINGDAO BAIJIA MACHINERY CO.,LTD.



Bai Jia

喷气织机系列产品

JAB Series Air-jet Loom

地址：青岛市黄岛区王台镇  
ADD: Wangtai town, Huangdao district, Qingdao  
电话TEL: 0086-532-5870 7598  
传真FAX: 0086-532-5870 7228  
手机MOB: 0086-13962577789  
网址Http: www.baijiajixie.com

E-mail: xiuhua0802@hotmail.com  
邮编P.C.: 266425  
南方办事处Branch of South  
苏州盛泽镇  
Shengze, Suzhou  
电话TEL: 0512-63537258

青岛百佳机械有限公司

QINGDAO BAIJIA MACHINERY CO.,LTD.

# 企业简介

Enterprise Profile



青岛百佳机械有限公司是纺织机械制造行业的专业生产厂家，尤其是在喷水和喷气织机的设计、制造领域，技术处于国内领先水平。主要生产JWB-922系列喷水织机，JAB-910系列喷气织机。公司产品畅销俄罗斯、土耳其、埃及、印度、巴基斯坦、印度尼西亚、越南、泰国等国家和地区，并已建立了成熟的、售后服务团队。

公司现拥有先进精良的机械、钣金、生产设备，技术先进的数控、精密大型设备，各类加工、金切、锻压设备等，建立了完备的生产、设计、管理体系。

多年以来，公司始终坚持技术创新，具有较强的新产品设计开发能力，同时注重企业信息化建设，为实现企业用电子信息技术改造传统的技术开发、生产制造和经营管理，达到信息资源集成与共享创造了条件，极大增强了企业的竞争实力。为了提高企业整体质量意识，实施了高起点、高标准的“零缺陷”质量管理理念，取得显著成效。

公司始终以客户为中心，重视产品质量和产品售后服务，大力培育企业文化，以“质量、品牌、诚信、创新”为工作主题，正向着“国际知名品牌”的企业目标而不断迈进！

Qingdao Baijia Machinery Co.,Ltd. is a professional manufacture in the textile machinery industry,especially in water jet loom and air jet loom,manufacturing filed,the technical is in the domestic leading level.The main products are JWB-922 series water jet loom and JAB-910 series air jet loom .Our products are sold well in Russia,Turkey,Egypt,India,Pakistan,Indonesia,Vietnam ,Thailand and other countries and regions , and has established the mature after-sales service team.

Our company owns advanced sophisticated machinery,metal,processing equipment,advanced CNC,large accurate equipments, various processing,metal-cutting,forging equipment,set up a comprehensive production , design and management system .

For years,our company always insist on the technical innovation,and has strong ability to develop new products design,at the same time the attention of the informatization construction of enterprise,to realize enterprise with electronic information technology to transform traditional technology development,production and managemen,information resource integration and sharing to create the conditions, greatly increased the competitive power of enterprises.In order to improve the quality consciousness of whole enterprise,implemented a high starting point,high standard of "zero defect" quality management ideas ,achieved remarkable success.

Our company always take the customers as the center,pay more attention to product quality and after -sale service,greatly cultivate enterprise,with "quality,brand,honest,and innovation"as the theme,now is working towards"International Famous Brand" business goals and constantly ahead.



# 企业实力

## Enterprise Strength



← CNC加工中心  
CNC processing center

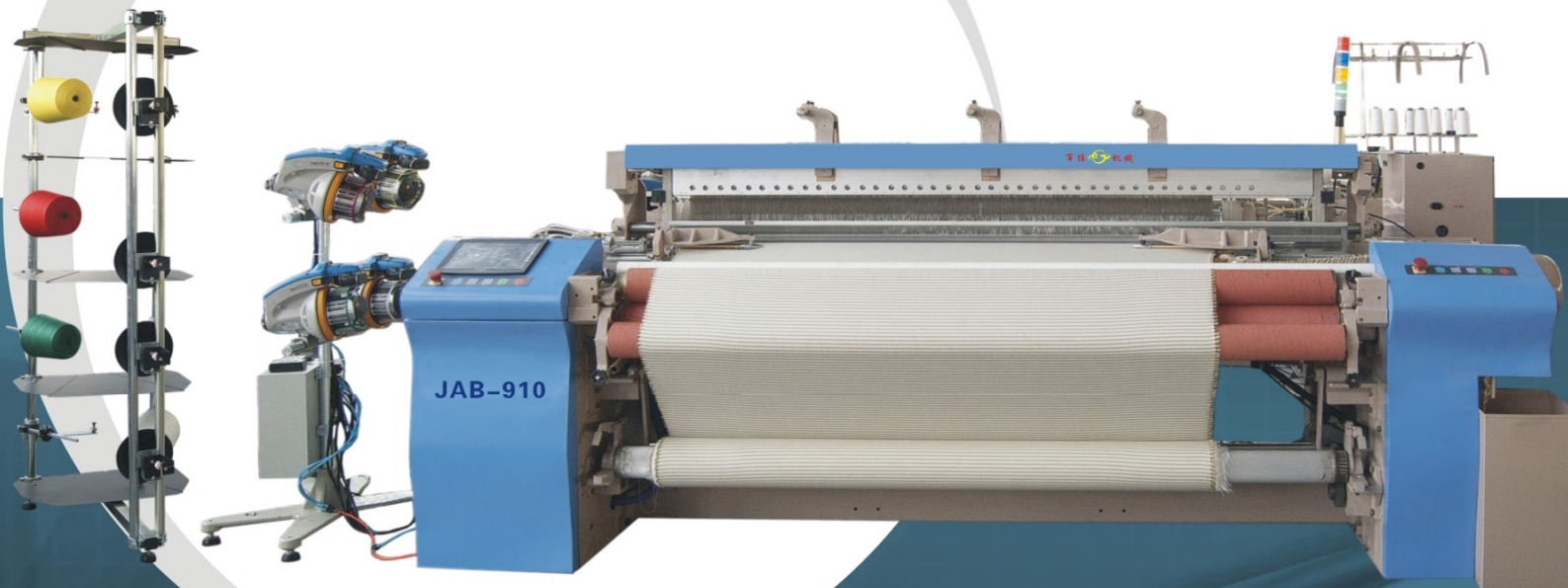


自动喷漆流水线 →  
Automatic painting line

# JAB-910-P

## 高速喷气织机(平机)

JAB-910-P HIGH SPEED AIR JET LOOM(PLAIN)



### 产品特点

JAB-910-P(平机)是曲柄开口,主要用于织造平纹织物。适合高速运转,低耗能,操作简单,成本低,符合用户投资小等特点。采用新型电控系统,大屏幕彩色液晶显示屏,人性化界面,可将织机运转状态、故障原因分析、织造工艺参数等信息显示在屏幕上,操作方便;并配有USB通讯接口,可将各种设定参数输入到其它织机中,方便快捷,并时时对织机的工作状态进行监控,提高了织造的效率和质量。

### Products features :

JAB-910-P, Crank shedding machine, mainly use for making plain design fabric, Have advantage of high speed, low energy consumption, easy operation, less investment etc. Adopt advanced electronic control system, 10 inch touch screen, can show looms running status, error reason analyse, parameters settings on the screen, easy for operation. It's with USB interface, can input all the parameters to other looms, and monitor the running situation of machines, thus increased the looms working efficiency and fabric quality.

### 主要技术参数

公称箱幅: 170cm- 420cm。  
储纬器: 2-16喷。  
入纬率: 2500米/分钟  
转速: 650转/分钟-1100转/分钟  
电机: 2.2千瓦-3.5千瓦

### Main technical parameters

Width :170cm-420cm  
Colors : 2 to 16 colors  
Filling insertion rate : 2500m/min  
Speed : 650rpm -1100rpm ( working speed depend on the fabric specifications )  
Motor : 2.2kw -3.5kw



# JAB-910-C(D)

## 高速喷气织机凸轮开口(多臂)

JAB-910-C(D) HIGH SPEED AIR JET LOOM CAM (DOBBY) SHEDDING



### 产品特点

JAB-910-C(D)凸轮开口、电子多臂织机-具有车速高,耗能低,织造品种适应性广。凸轮开口能配8片综框,能织平纹、斜纹、缎纹等多种组织品种;电子多臂织机,设定操作简单,翻改品种快,易操作,最多能配16片综框,能织平纹、斜纹、缎纹、小提花组织等所有品种的织造要求。

### Products features :

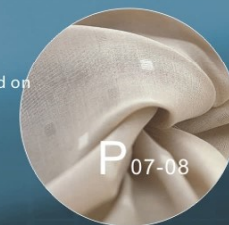
High speed ,low energy consumption ,wider application of fabrics . Cam Shedding is with 8 pcs heald frames , can make plain , twill ,satin etc designs ; Electronic dobby , easy setting and operation , and very convenient for changing designs . it's with maximum 16pcs heald frames , can make plain ,twill ,satin and some easy jacquard designs.

### 主要技术参数

公称箱幅: 170cm- 420cm。  
储纬器: 2-16喷。  
入纬率: 2500米/分钟  
转速: 650转/分钟-1100转/分钟  
电机: 3.0千瓦-6.5千瓦

### Main technical parameters

Width :170cm-420cm  
Colors : 2 to 16 colors  
Filling insertion rate :2500m/min  
Speed : 650rpm -1100rpm ( working speed depend on the fabric specifications )  
Motor : 3.0kw -6.5kw



# JAB-910-J

## 双经轴提花喷气织机

JAB-910-J Air jet looms with electronic jacquard



### 产品特点

大提花喷气织机，可配上下双经轴，为纺织企业解决了开发高附加值双面织物时遇到的浆纱和织造的难题（如上盘头为长丝，下盘头为棉纱）是纺织企业开发高档织物产品（遮光布、高档家纺布、色织布）提高产品质量、降低劳动成本，提高经济效益的理想设备。适合高速织造大提花织物，如窗帘，床单等多色织物。提花装置可选用2688针、5012针等。

### Products features :

JAB-910-J ,Air jet looms with electronic jacquard , can install up-down double beam attachments , solved the weaving mills' problems about sizing and weaving when they develop high added value reversible fabrics( for example , upper beam is filaments , lower beam is cotton ) . It's the ideal model when weaving mills develop top grade fabrics ( for example black out fabrics , home textiles , dyed yarn fabrics ) , enhance the fabric quality , reduced the labor cost , increased the weaving mills' profit etc . Suitable for making jacquard fabrics , such as curtain , bed sheet , Jacquard can choose 2688 hooks , 5012 hooks .

### 主要技术参数

公称箱幅：170cm-360cm。  
储纬器：2-16喷。  
入纬率：2500米/分钟  
转速：650转/分钟-1100转/分钟  
电机：4.5千瓦-6.5千瓦

### Main technical parameters

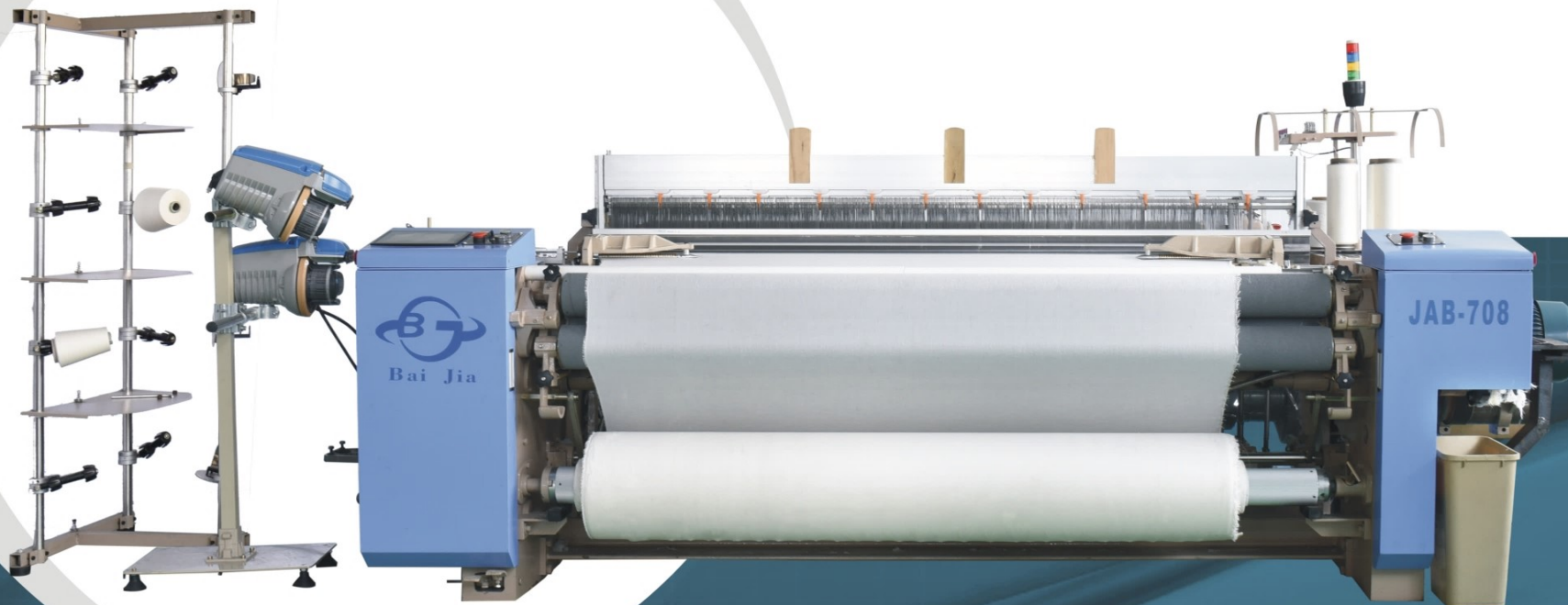
Width :170cm-360cm  
Colors : 2 to 16 colors  
Filling insertion rate :2500m/min  
Speed : 650rpm -1100rpm ( working speed depend on the fabric specifications )  
Motor : 4.5kw -6.5kw



# JAB-708

## 独立供气喷气织机

JAB-708 Independent air supply air jet loom



### 产品特点

推荐理由：投资少，耗能小，收益高，见效快。

技术参数：自身配备气泵，无需额外采购空压机；开口可选曲柄、凸轮、多臂；纬纱选色：1色、2色

JAB-708 Independent air supply air jet loom

Recommended reason: small investment, small energy, high earnings, quick effect.

Technical parameters: equipped with air pump itself, no need to purchase air compressor; shedding can be plain/cam/dobby; weft selection: one color and two colors.

### 主要技术参数

#### Main technical parameters

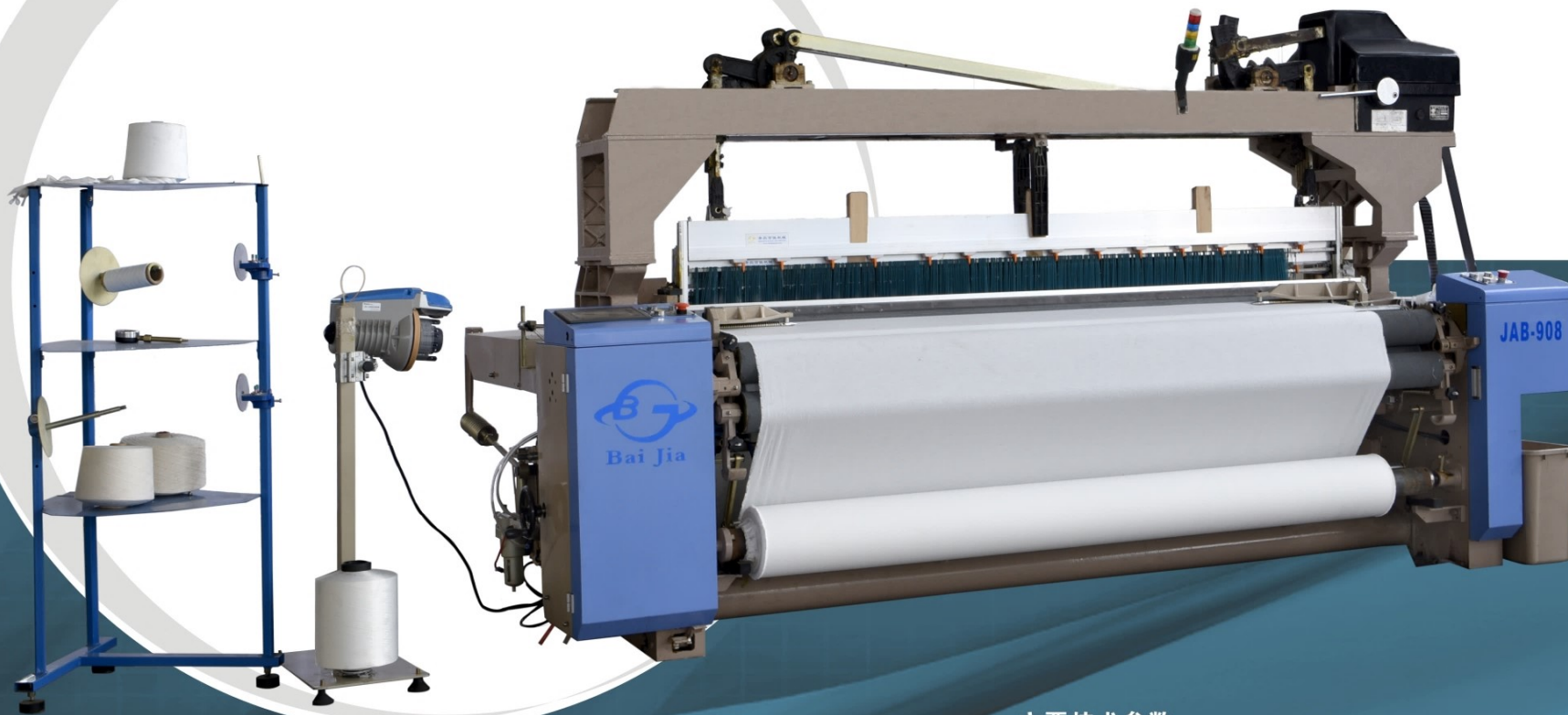
- |  |  |
|--|--|
| 1. 箱幅：公称箱幅：135、150、190、210(cm)   | Reed Space (nominal): 135 150 190 210(cm)  |
| 2. 储纬：电子单、双喷储纬   | Feeder: electronic single feeder or double feeder  |
| 3. 动力：电磁制动器定位停车控制；<br>马达：3KW-3.7KW   | Power: electromagnet brake pan;<br>Motor: 3KW-3.7KW  |
| 4. 开口：四片棕框，曲柄开口  | Shedding: crank opening with four pieces heald frame.  |
| 5. 打纬：四连杆挠性打纬  | Beating: four shedding lever winding beating   |
| 6. 转速：每分钟400-500转  | Running speed: 400-500RPM  |
| 7. 占地面积：135型长3050mm × 宽1540mm<br>150型长3200mm × 宽1540mm<br>190型长3600mm × 宽1540mm<br>机外卷取装置宽1300mm | Dimensions: 135CM 3050mm*1540mm<br>150CM 3200mm*1540mm<br>190CM 3600mm*1540mm<br>Device width 1300mm for outside take-up |



# JAB-908

## 经济型喷气织机

JAB-908 ECONOMY AIR JET LOOM



### 产品特点:

经济型喷气织机，集中供气，刚性强，稳定性高，防共振，噪音小，适用于织造各类常见织物。

### Product features

JAB-908 economy air jet loom, centralized air supply, strong rigidity, high stability, anti-resonance, low noise, suitable for weaving all kinds of common fabrics.

### 主要技术参数:

箱幅: 130-280cm  
储纬: 1-2喷  
引纬: 主、辅喷嘴, 异形钢筘  
开口: 1.曲柄开口 2.积极式凸轮 3.多臂开口  
4.提花龙头开口  
转速: 500-700转  
打纬: 四连杆曲柄打纬

### Parameters:

Reed width: 130-280(cm)  
Weft selection: 1-2 color  
Weft insertion: main, auxiliary nozzle, profiled reed  
Shedding: crank shedding/positive cam shedding/dobby shedding/jacquard shedding  
Speed: 500-700rpm  
Beating: four linkage crank beating





# JAB-910 喷气织机

JAB-910 AIR-JET LOOM



Bai Jia machinery  
织造经纬 共赢世界

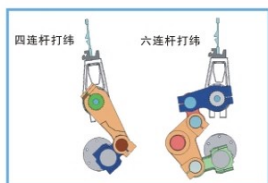


## 【坚固的机架、新型的结构】

Hard frame and new structure

采用强韧的两侧型墙板和扎实的横梁组合成坚固的机架，并增加了机架中间支撑，抗震性和可靠性好，确保了织机高速化、宽幅化和低噪音。

The strong frame was adopted robust wallboard and solid beam. Furthermore, we increase middle support to ensure that our loom could work in high speed, low voice, and the reed become wider.



## 【优化设计的打纬结构】

Optimized design of Beating structure

利用计算机优化设计的四连杆、六连杆打纬结构，打纬动程短，振动小、对应的引纬时间长，在超高速运转时，能进行强有力的稳定打纬，制造出高质量的织物产品。窄幅机采用了在高速适应性方面获有优秀评价的4节连杆打纬。宽幅机侧采用了引纬时间充足的6节连杆打纬，从而实现了高速运转时的稳定打纬。

Using the four / six linkage beating structure which is optimized designed by the computer, the beating vibration is short, stroke is small, corresponding the weft time is long. In the high-speed adaptive inspect. While, the wide range of machines adopt 6 linkage beating in weft's time which is much more enough, thus to realize the stable beating when run with high speed.



## 【超启动电机】

Super startup Motor

采用超启动电机实现了织机启动时的扭矩变化，防止停车挡及第一纬的松弛。

Motor is super startup heavy duty, which can produce high output torsion when starts and avoid stop marks, improved the fabric quality.



## 【润滑】

Lubrication

主传动部位采取了油浴润滑，其它采用集中供油系统对部件进行定量润滑，有效提高了部件的工作寿命。

The main drive shaft to take oil bath lubrication, the general part utilized centralized system to Quantitative lubrication, the aim is to improve the working life of components.



## 【探纬器】

Feeler

探纬器采用双探头方式，除了探知通常的短纬或弯纬外，还可以探知经纬纱被吹短或长纬的现象，从而保证织物的高品质。

Double probe feeler, it is not only to discovery short or bending weft, but also to find the weft which was blown away or longer weft, thus to ensure the high quality of fabric.



## 【卷取装置】

Take-up device

采用电子卷取形式。结合电子送经通过准确的正反转对防止停车挡很有效。

We adopt electronic take-up. It is very effective to prevent the stop-mark to combine with e electronic let-off by accurate forwarder and reverse.

## 【引纬装置】

Filling insertion

采用主喷嘴+辅助主喷嘴+异形筘配合的引纬方式，实现了双动力引纬，且确保了机器的高速运转的稳定性。

Adopting the filling insertion of main nozzles, sub-nozzle and profile reeds, realize the double power filling insertion and assure the stability when machines run in high speed.



## 【电子送经装置】

Electronic let-off

通过张力传感器检测经纱总张力，由CPU处理由于开口或松经、送经、经轴的卷径变化引起的经纱张力变化，指令伺服电机传动经轴，从而在工作过程中保持均衡化的张力，消除了开车稀密档，保证织物均衡平整。采用刚性的机架、大直径的经轴齿轮和内装油浴式积极松经传动轴等，使织机更进一步实现了高速化、可以更加灵敏的适应高密织物的织造要求。

To detect the total inspection of warp yarns through tension sensor, the CPU handles the change of warp yarns tension caused by shedding or relax warp, let-off, take-up's change of warp beam, and instructs the servo motor to drive warp beam, thus, this can keep the balanced tension in working procedure and eliminate the rare or dense mark, ensure the fabric equilibrium & formation. The machine adopts rigidity frame, warp beam gear with large diameter and positive relax warp driving shaft which is built-in oil bath, which makes the weaving machine future to realize high speed and can be more sensitive to adapt the weaving requirements for high-density fabrics.



## 【节能】

Energy saving

采用国际最先进的超节能辅喷电磁阀，灵敏度高，精密的喷射，节约了气量的消耗。

Using the world wide most advanced energy saving auxiliary valves. High sensitivity and precision jet, lessen the consumption of air.



## 【摇轴中间支撑装置】

Rocking shaft intermediate supporting device

摇轴采用实心轴带中支撑的装置，提高了打纬机构的刚性，在高速运转中准确有力的打纬是织造高密度织物的保证。

Rocking shaft adopts solid shaft which is with supporting device in middle, it increases the rigidity of beating structure, the accurate and powerful beating in high speed running is the guarantee for weaving the high-density fabrics.



## 【提花光边装置】

Tuck in device with jacquard

由电子控制的喷射气流使纱端内折，实现织物光边织造，结构简单，使用方便，不会由于机械故障而损坏钢筘，也不会由于机械零件的磨损而影响布边质量。

Making the yarn end folded inside by high compressed air, realize the plain boarder, easy operation, will not damage the reed due to the mechanical parts problems, neither influence the quality of fabric boarder due to the parts worn.

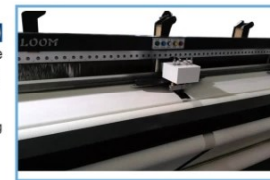


## 【中间光边装置】

Center tuck-in device

电子控制的气动折入边装置，直接将两边的经纬织入布边，实现了双幅光边与多幅光边的织造。

Electronic pneumatic tuck-in device, making the weft yarn end into fabrics, use for weaving double cloth or multi cloth.



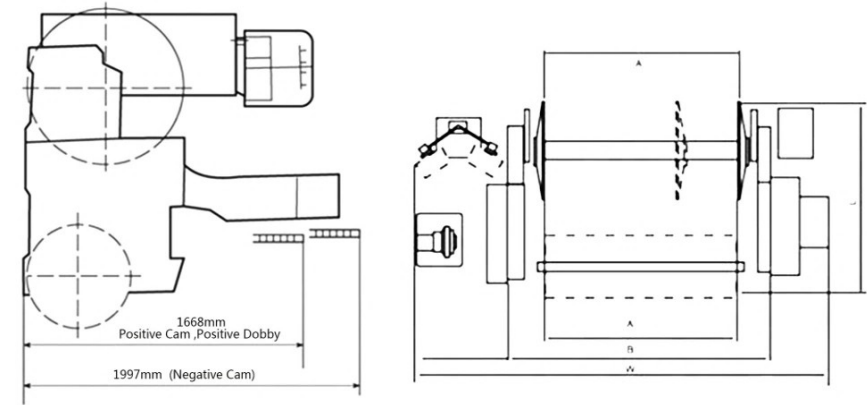
# 喷气织机主要技术特征

The Technical Information

项目 Items	规格 Specifications	选择件 Options
箱幅 Width	公称箱幅 Normal width	170-420cm
	有效穿箱幅 Effective fabric width	公称箱幅减 (Normal width cut) 0-60cm(190-250cm) 公称箱幅减 (Normal width cut) 0-80cm(280cm以上)
车速 Speed	650rpm-1100rpm	
织造范围 Application	织造棉、毛、麻及化纤织物 Weaving all kinds cotton, wool, linen, and polyester fabrics	
Yarn range	短纤Spun: Ne 100-Ne5 长纤Filament: 50D-2000D	
纬纱选择 Weft selection	双喷 Two Colors	4-16喷(colors)
电控系统 Electronic Panel	人工智能触摸屏, 具有参数设定, 自动控制, 自动监控, 自我诊断等功能 Intelligence computer control system, setting parameters, monitoring, self-diagnosis display etc function	
开口 Shedding	曲柄平开口: 综框最多6页 Crank shedding: Maximum 6 frames	
	积极式凸轮开口: 综框最多8页 Positive cam shedding: Maximum 10 frames	
	多臂开口: 综框最多16页 Dobby shedding: Maximum 16 frames	
	电子提花开口 Electronic jacquard	
送经 Let off	边盘直径 Flange dia	800mm 914, 1000mm
卷取 Take up	ETU: 电子卷取 Electronic take up	
	最大卷布直径 Maximum cloth roll dia	600cm 机外大卷装 Outer Batching
打纬 Beating system	4连杆打纬 (箱幅190-280cm以下) Four link rod beating (width 190cm-280cm)	
	6连杆打纬 (箱幅280-420cm) Six link rod beating (width 280cm-420cm)	
织边 Selvage	行星齿轮方式 (中间纱罗织边) Planetary gear type (middle leno)	
剪纬 Cutter	机械式剪刀 Mechanical	电子式 Electronic
加油 Grease	主要传动部分为滴油方式、集中加油 (黄油手动) Oil bath in main driving parts, centralized grease	电子式 Electronic
中间剪刀 Middle cutter	机械式 (织造双幅时用) Mechanical (For double cloth)	电子式 Electronic
布边形式 Boarder: Raw	毛边 Raw	气动光边 Pneumatic tuck in

## 喷气外形尺寸图

Air Jet Loom Outer Dimension



Flange Diameter	Φ800
L	1860

Note:

1. Figure in the "L" section is the dimension for the flange diameter of 800mm, for details of other specifications please contact us
2. When the flange diameter is 800mm or 1000mm, liners or an excavated floor is required according to the beam mounting position.

Reed space cm		190(75)	210(83)	230(91)	250(98)	280(110)	340(134)	360(142)
W (2c)	negative cam	3990	4190	4390	/	/	/	/
	positive cam(STAUBL1:1661)	4330	4530	4730	4930	5230	5730	5930
	floor-mountef positive dobbie(STAUBL1:2658)	4420	4620	4820	5020	5320	5920	6120
A		1900	2100	2300	2500	2800	3400	3600
B		2540	2740	2940	3140	3440	4040	4240

FIGURES IN THE W SECTION ARE THE DIMENSIONS FOR A 2-COLOR LOOM WITH OUT THE WBS, FOR OTHER SPECIFICATIONS PLEASE CONTACT US